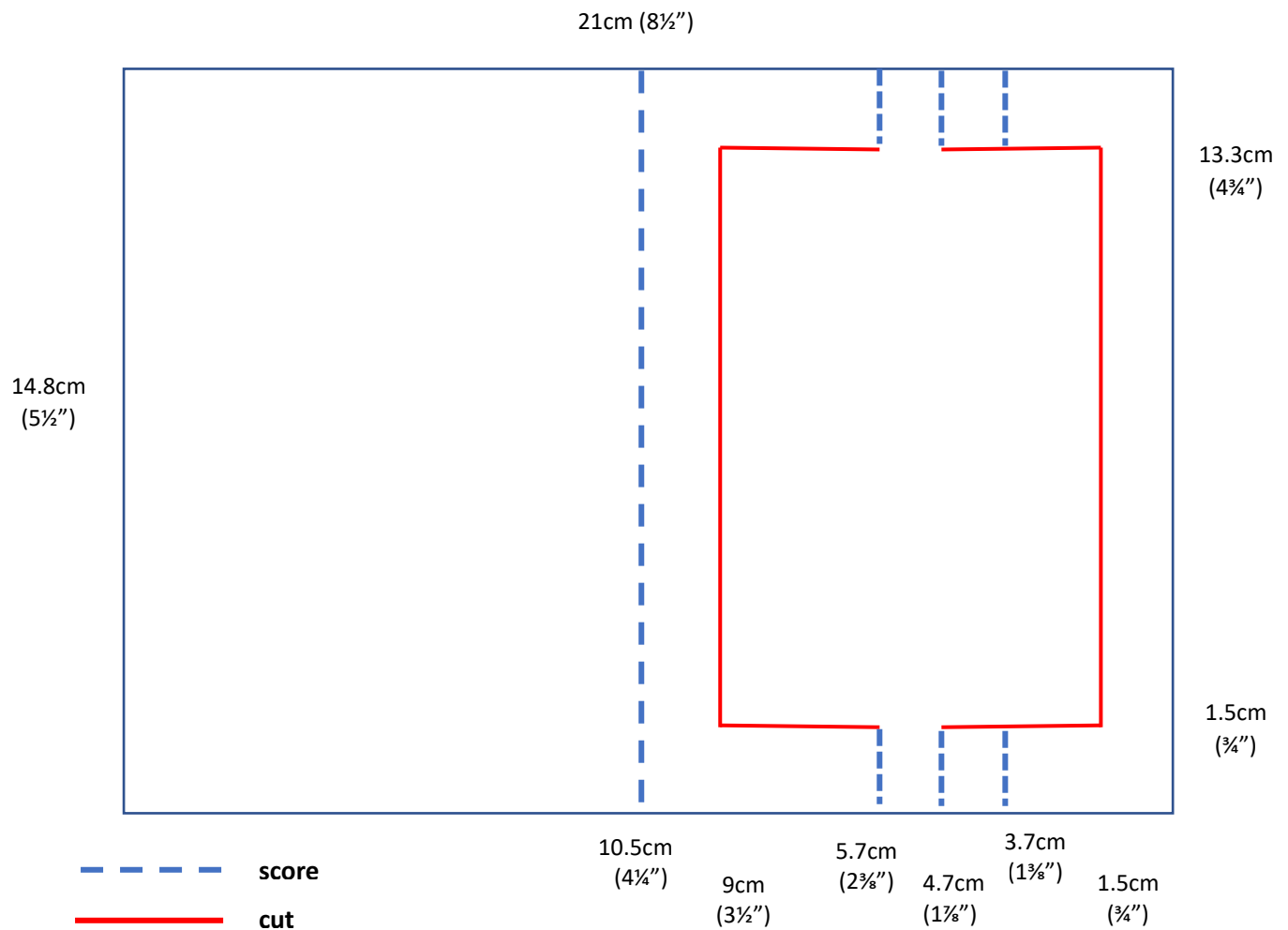


# Swing Easel Card



See the diagram and the instructions below to follow in the YouTube video - <https://www.youtube.com/watch?v=IjF5Jt5sjas>.

For more samples, visit my blog - <https://lavenderthoughts.com/category/swing-easel-card/>



# Swing Easel Card

## METRIC

1. Start with a piece of cardstock 21cm x 14.8cm (½ piece A4).
2. Score in half at 10.5cm.
3. On the long side, line left hand side of cardstock at 1.5cm on paper trimmer.
4. Cut from 1.5cm to 13.3cm.
5. Move cardstock along to 9cm on paper trimmer and cut from 1.5cm to 13.3cm.
6. Turn cardstock 90°.
7. Line left hand side of cardstock at 1.5cm on paper trimmer.
8. Cut from 1.5cm to 4.7cm, move cutting blade to 5.7cm and cut to 9cm.
9. Move cardstock to 13.3cm on paper trimmer.
10. Cut from 1.5cm to 4.7cm, move cutting blade to 5.7cm and cut to 9cm.
11. Turn cardstock back 90°.
12. Line left hand side of cardstock at 3.7cm on paper trimmer.
13. Score from edge to cut line. Move scorer to other end and score from cut to edge.
14. Move cardstock along to 4.7cm on paper trimmer and score from edge to cut line. Move scorer to other end and score from cut to edge.
15. Move cardstock along to 5.7cm on paper trimmer and score from edge to cut line. Move scorer to other end and score from cut to edge.
16. Fold card in half along 10.5cm score line. Fold other score lines as mountain, valley, mountain.
17. Cut a piece of neutral cardstock 11.3cm x 7cm and decorate for the front art panel. Attach to the 'swing' on the card front.
18. Cut a piece of neutral cardstock 14.3cm x 10cm, decorate for the inside. Attach to the card base.
19. Stamp sentiment and die cut/punch.
20. Open swing easel and attach sentiment piece to the inside of the card with Dimensionals. This allows the easel to stand open.
21. OPTIONAL: Add Designer Series Paper to the front frame. Take a piece 14.3cm x 10cm and cut a 1cm frame to attach to the front of the card.
22. OPTIONAL: Add Designer Series Paper strip 14.3cm x 1cm to base of inside layer.
23. OPTIONAL: Add Designer Series Paper strip to front of envelope – either along the left hand side or along the bottom.

## IMPERIAL

1. Start with a piece of cardstock 8½" x 5½" (½ piece letter size).
2. Score in half at 4¼".
3. On the long side, line left hand side of cardstock at ¾" on paper trimmer.
4. Cut from ¾" to 4¾".
5. Move cardstock along to 3½" on paper trimmer and cut from ¾" to 4¾".
6. Turn cardstock 90°.
7. Line left hand side of cardstock at ¾" on paper trimmer.
8. Cut from ¾" to 1⅞", move cutting blade to 2⅜" and cut to 3½".
9. Move cardstock to 4¾" on paper trimmer.
10. Cut from ¾" to 1⅞", move cutting blade to 2⅜" and cut to 3½".
11. Turn cardstock back 90°.
12. Line left hand side of cardstock at 1⅜" on paper trimmer.
13. Score from edge to cut line. Move scorer to other end and score from cut to edge.
14. Move cardstock along to 1⅞" on paper trimmer and score from edge to cut line. Move scorer to other end and score from cut to edge.
15. Move cardstock along to 2⅜" on paper trimmer and score from edge to cut line. Move scorer to other end and score from cut to edge.
16. Fold card in half along 4¼" score line. Fold other score lines as mountain, valley, mountain.
17. Cut a piece of neutral cardstock 3¾" x 2¼" and decorate for the front art panel. Attach to the 'swing' on the card front.
18. Cut a piece of neutral cardstock 5¼" x 4", decorate for the inside. Attach to the card base.
19. Stamp sentiment and die cut/punch.
20. Open swing easel and attach sentiment piece to the inside of the card with Dimensionals. This allows the easel to stand open.
21. OPTIONAL: Add Designer Series Paper to the front frame. Take a piece 5¼" x 4" and cut a ½" frame to attach to the front of the card.
22. OPTIONAL: Add Designer Series Paper strip 5¼" x ½" to base of inside layer.
23. OPTIONAL: Add Designer Series Paper strip to front of envelope – either along the left hand side or along the bottom.