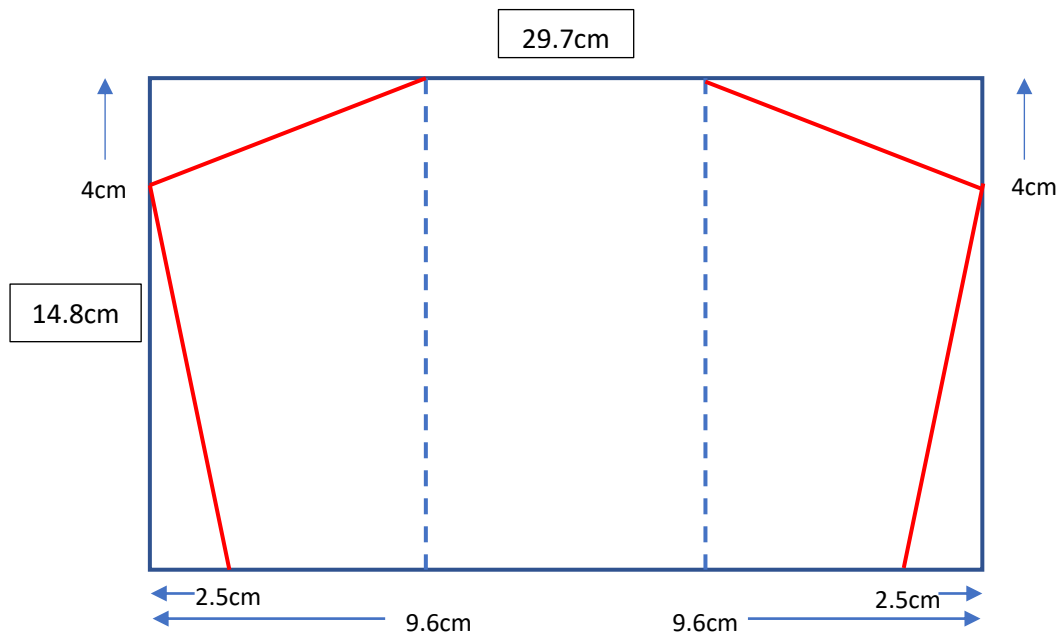


# Angled Fold Card



## Instructions:

- Cut a piece of cardstock 29.7cm x 14.8cm
- Score at 9.6cm from each end on the long side.
- Make a mark at 4cm down from the top on the short side (both sides). Cut along the top from the 9.6cm score line to the 4cm mark.
- Make a mark at 2.5cm in from each side on the bottom. Cut from the 4cm mark on the side to the 2.5cm mark.
- Fold each side at the score lines.
- Decorate right hand front with Designer Series Paper (DSP). Cut a piece 9.1cm x 14.3cm. Measure down 4cm on the left hand side and cut from the top right hand corner to the 4cm mark. Measure 2.5cm in from the left hand bottom corner and cut from the 4cm mark on the side to the 2.5cm mark on the bottom. Use the small triangle pieces to decorate the inside and envelope.
- Decorate the left hand front by either stamping or with DSP. If using DSP cut as for right hand front but cut the angled pieces from the right hand side.