

Double Mini Miura Fancy Fold Card



Standing Upright



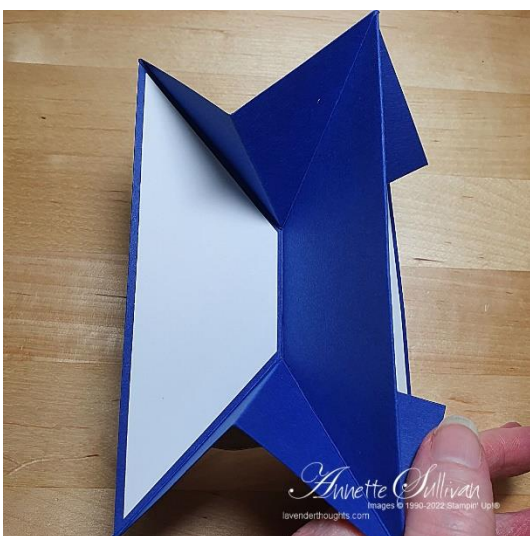
Lying Flat to fit in envelope



Front Top



Front Base



Back Left



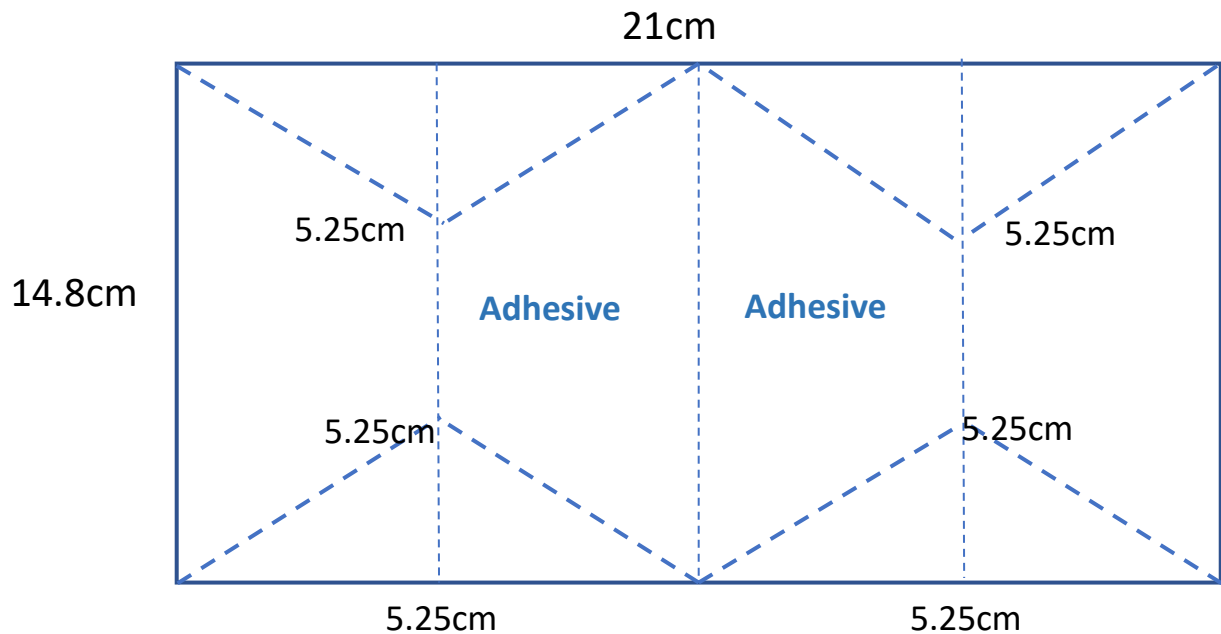
Back Right

Double Mini Miura Fancy Fold Card

CARDSTOCK

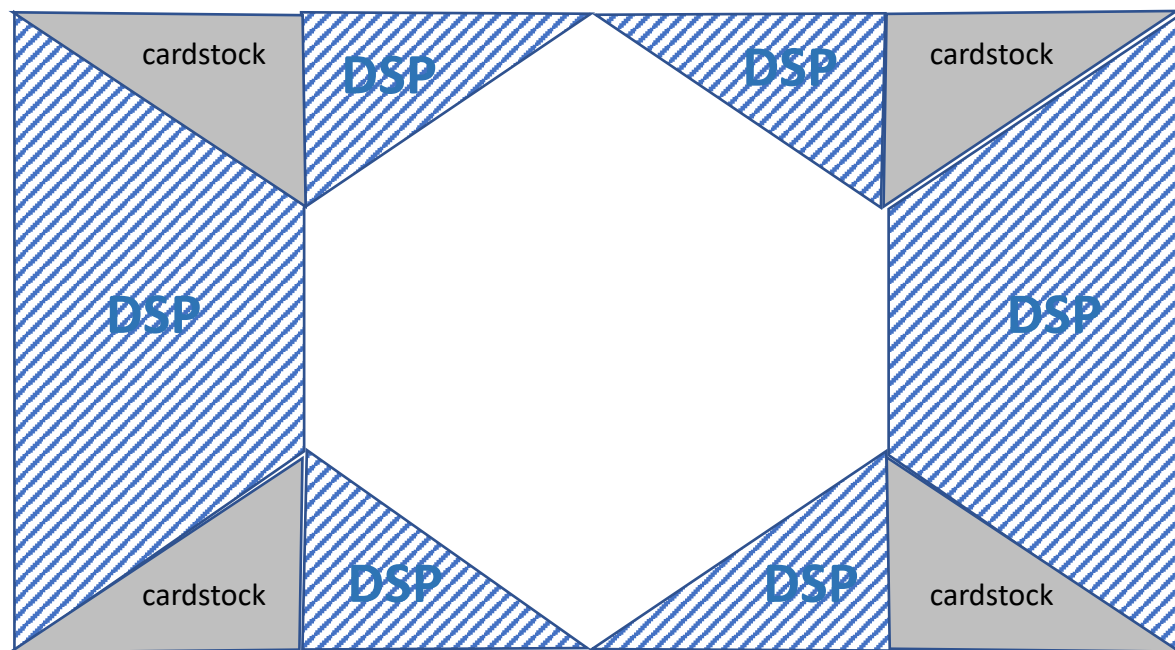
1. Score at 10.5cm on the long side.
2. Turn cardstock over and score at 5.25cm from each end on the long side.
3. On the 5.25cm score lines, mark a point at 5.25cm from the top and bottom. Score as shown in the diagram.

CARDSTOCK 21cm x 14.8cm



DESIGNER SERIES PAPER and NEUTRAL CARDSTOCK

- 2 pieces of DSP each 13.8cm x 4.75cm
- 2 pieces of neutral cardstock each 13.8cm x 4.75cm (the two large pieces of cardstock go on the back of the card on the same panel as the large DSP).
- Cut DSP and cardstock as shown below

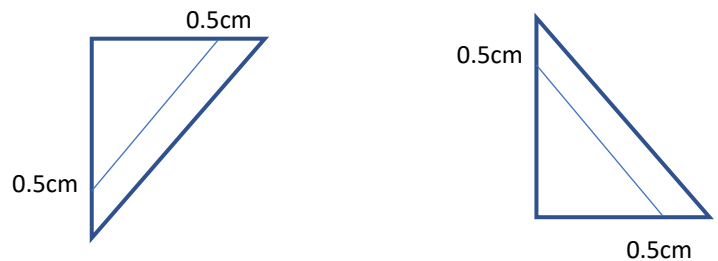
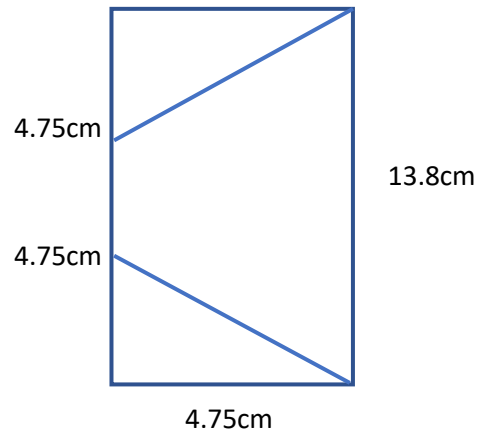


Double Mini Miura Fancy Fold Card

Right DSP and back/front cardstock

On the right hand side, mark a point 4.75cm from the top. Cut from the top left hand corner to the mark on the right hand side.

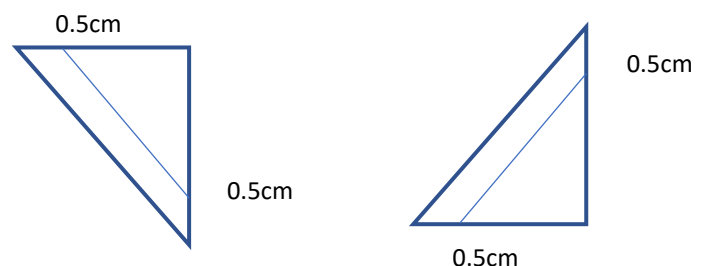
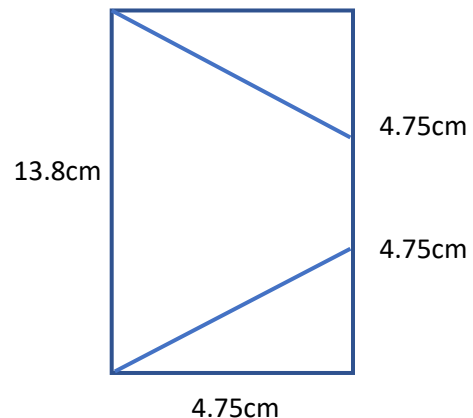
1. On the right hand side, mark a point 4.75cm from the bottom. Cut from the bottom left hand corner to the mark on the right hand side.
2. Take the top triangle, mark a point 0.5cm from the left hand side along the top. Mark another point 0.5cm from the bottom on the right hand side. Cut from the top mark to the bottom mark. Discard the small piece.
3. Take the bottom triangle, mark a point 0.5cm from the top along the right hand side. Mark another point 0.5cm from the bottom left hand side. Cut from the top mark to the bottom mark. Discard the small piece.



Left DSP and back/front cardstock

Repeat these four steps for one piece of the DSP and one piece of the cardstock.

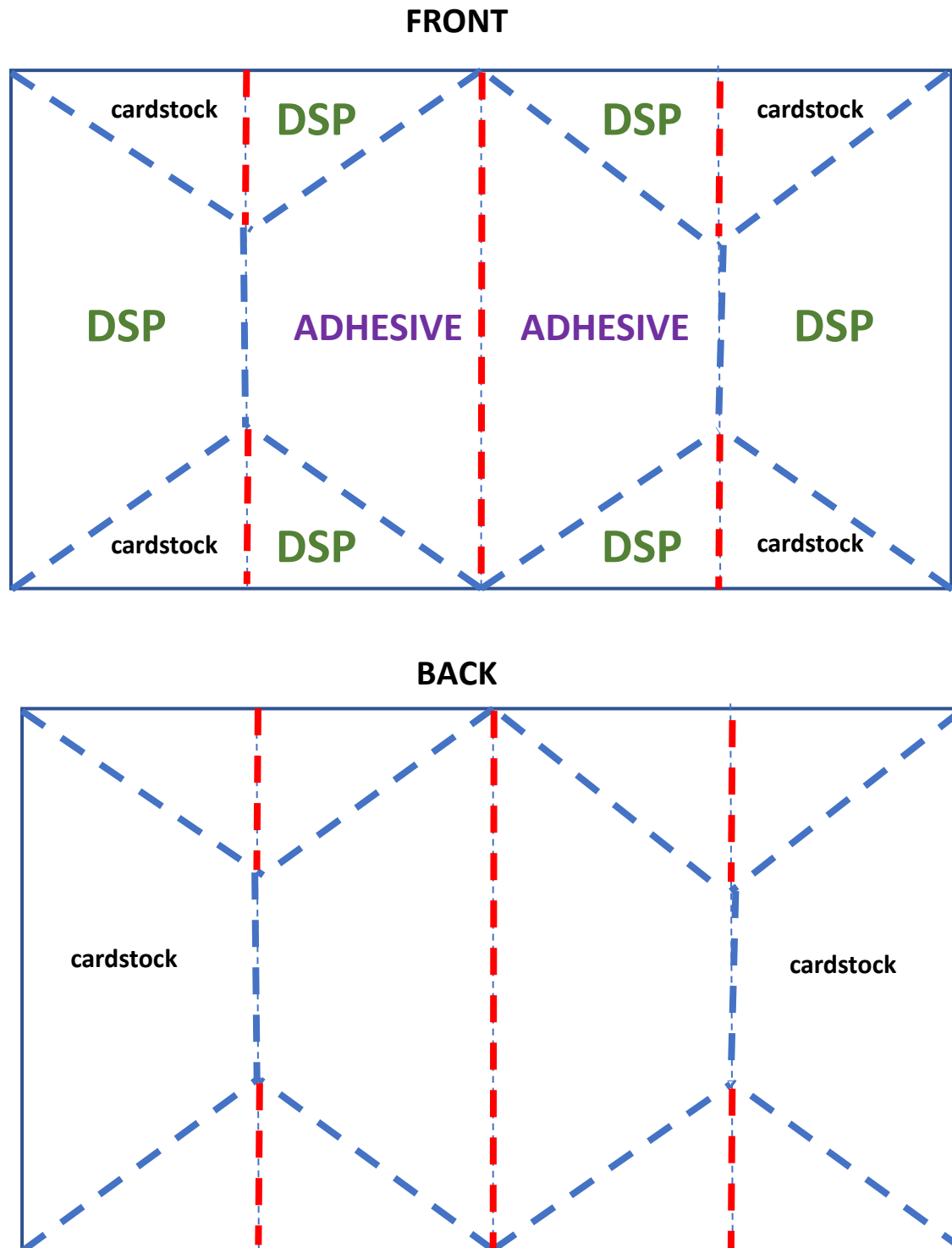
1. On the left hand side, mark a point 4.75cm from the top. Cut from the top right hand corner to the mark on the left hand side.
2. On the left hand side, mark a point 4.75cm from the bottom. Cut from the bottom right hand corner to the mark on the left hand side.
3. Take the top triangle, mark a point 0.5cm from the right hand side along the top. Mark another point 0.5cm from the bottom on the left hand side. Cut from the top mark to the bottom mark. Discard the small piece.
4. Take the bottom triangle, mark a point 0.5cm from the top along the left hand side. Mark another point 0.5cm from the bottom right hand side. Cut from the top mark to the bottom mark. Discard the small piece.



Repeat these four steps for one piece of the DSP and one piece of the cardstock.

Double Mini Miura Fancy Fold Card

Assembling the card:



1. **ON THE FRONT OF THE CARD:** Fold the blue scores as mountain folds and the red scores as valley folds.
2. Attach DSP and neutral cardstock as per the diagram on the front of the card.
3. Turn the card over and attach the two large pieces of neutral cardstock on the panels behind the DSP panels on the front.
4. On the front of the card, add adhesive as shown and join together.
5. Use die cuts to add a sentiment panel to make the card either landscape or portrait.

The only difference between the portrait and landscape versions is how the sentiment panel is attached.

Double Mini Miura Fancy Fold Card

Some other examples:



Back of cards

