

Supplies:

Rich Razzleberry cardstock – 21cm x 14.8cm, scrap for sentiment
Whisper White cardstock – 14.3cm x 10cm; 11.3cm x 7cm, scrap for sentiment
Silver Glimmer Paper – scrap for star
Silver Sparkle Dazzling Details
Sponge Daubers

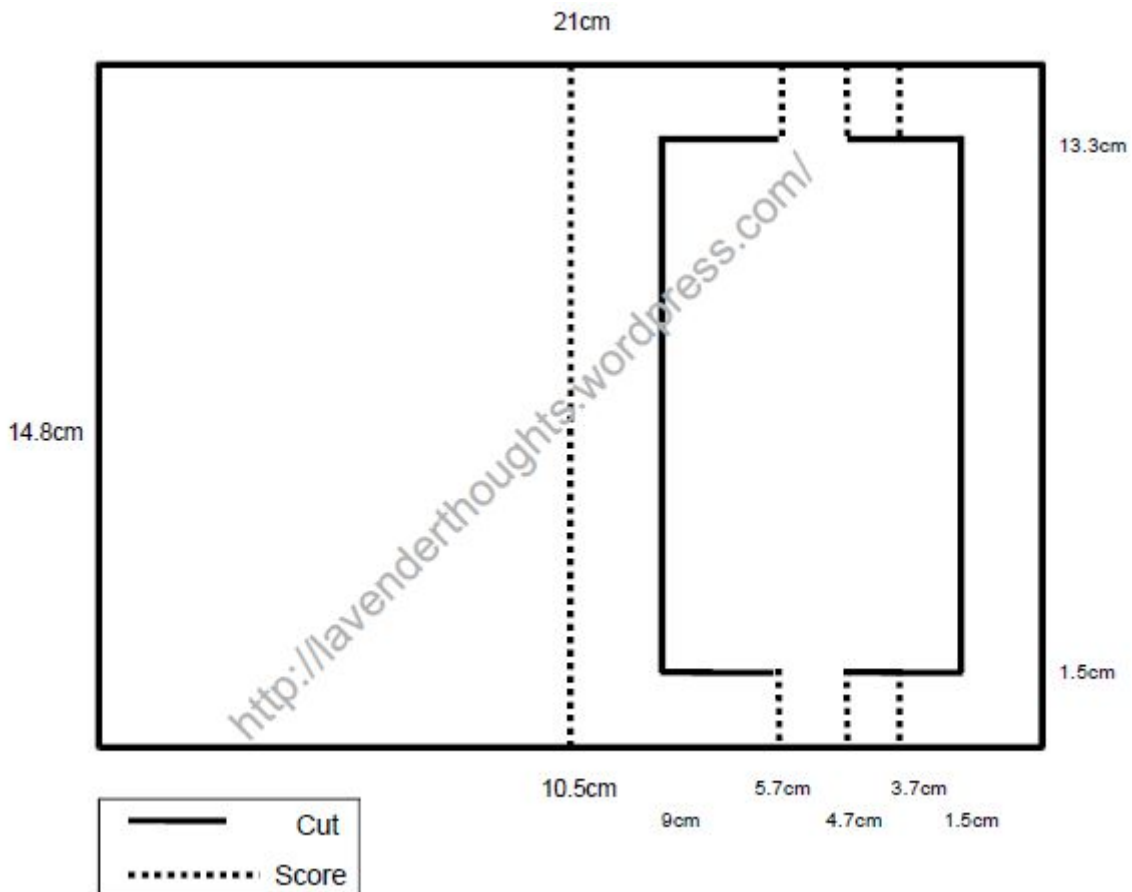
Stamps:

Every Blessing

Ink:

Daffodil Delight
Night of Navy
Rich Razzleberry
Tempting Turquoise
Memento Tuxedo Black

Instructions:



Create Swing Easel Card:

1. Start with a piece of cardstock 21cm x 14.8cm (½ piece A4).
2. Score card in half at 10.5cm.
3. Line right hand side of cardstock at 1.5cm on paper trimmer.
4. Cut from 1.5cm to 13.3cm.
5. Move cardstock along to 9cm on paper trimmer.
6. Cut from 1.5cm to 13.3cm.
7. Turn cardstock 90°.

8. Line right hand side of cardstock at 1.5cm on paper trimmer.
9. Cut from 1.5cm to 4.7cm, move cutter to 5.7cm and cut to 9cm.
10. Move cardstock along to 13.3cm on paper trimmer.
11. Cut from 1.5cm to 4.7cm, move cutter to 5.7cm and cut to 9cm.
12. Turn cardstock back 90°.
13. Line right hand side of cardstock at 3.7cm on paper trimmer.
14. Score from edge to cut line. Move scorer to other end and score from cut to edge.
15. Move cardstock along to 4.7cm on paper trimmer.
16. Score from edge to cut line. Move scorer to other end and score from cut to edge.
17. Move cardstock along to 5.7cm on paper trimmer.
18. Score from edge to cut line. Move scorer to other end and score from cut to edge.
19. Fold card in half along 10.5cm score line. Fold other score lines as mountain, valley, mountain.

Create Northern Lights Panel:

1. Cut a front panel 11.3cm x 7cm.
2. Using Daffodil Delight, Tempting Turquoise and Rich Razzleberry inks and sponge daubers, apply ink in vertical stripes to cover the entire panel.
3. Use Night of Navy and a sponge dauber to lightly go over colours – keep dauber to a vertical motion.
4. Stamp image on art panel using Memento Tuxedo Black ink.
5. Sponge Night of Navy under the image to ground it.
6. Punch star from Glimmer Paper and attach over star image. Attach panel to front of easel.
7. Cut a panel for the middle of the card 14.3cm x 10cm. Add some stripes down each side with sponge daubers from step 2 without reinking them. Attach panel to card.
8. Stamp sentiment on scrap white, layer with scrap Razzleberry and add to middle of card with dimensionals. This will hold the easel panel open.
9. As a final step, add Silver Sparkle Dazzling Details to represent rays from the big star, and as small stars on the art panel.



Annette Sullivan
Independent Stampin' Up!® Demonstrator
[Shop](#) online with me
Email me [here](#)

Visit my [Website](#)
Visit my [Facebook Page](#)

See the latest projects on my [blog](#)